

YATAHLIA MANOR

# Services & Pricing Guide



[www.yatahliamanor.com](http://www.yatahliamanor.com)





# Hello there!

I'm delighted that you are contemplating Yatahlia Manor to be part of your special event.

Welcome to my home, Yatahlia Manor, a beautiful 7-acre oasis privately nestled in its own magical botanic setting on the outskirts of suburbia.

Together with my wonderful husband Gary, who has provided me with the ability to make my dreams come true, we invite you to share our unique estate.

Yatahlia is a picturesque site for romantic proposals, ceremonies or photography sessions. We also enjoy hosting overnight guests but specialise in wedding-eve stays. They are perfect for brides to unwind with their bridal party the night before their big day, and then prepare themselves in the exquisite surroundings.

We are often asked, "how can you invite strangers to stay in your home?"

The answer is very simple really - Opening our doors & our hearts means we have an endless supply of new friends & possibilities.

*Lorelie*

Co-owner & Venue manager, Yatahlia Manor

# Location & BnB Accommodation

Yatahlia Manor is a stunning Bed & Breakfast and event venue centrally located in the Tea Tree Gully area of Adelaide. This serene estate is less than 40 minutes between the amazing Adelaide Hills, the beautiful Barossa Valley, the pristine beaches and Adelaide's city centre.

The timeless Manor sits beside a tranquil duck pond with a fountain & waterfalls, sweeping lawns, and gorgeous gardens.

It features four large luxurious rooms available for a maximum of 8 guests for overnight accommodation.

Ideal for those who want to explore some of the wonderful wine regions of Adelaide and indulge themselves in the unique comforts that Yatahlia Manor has to offer.

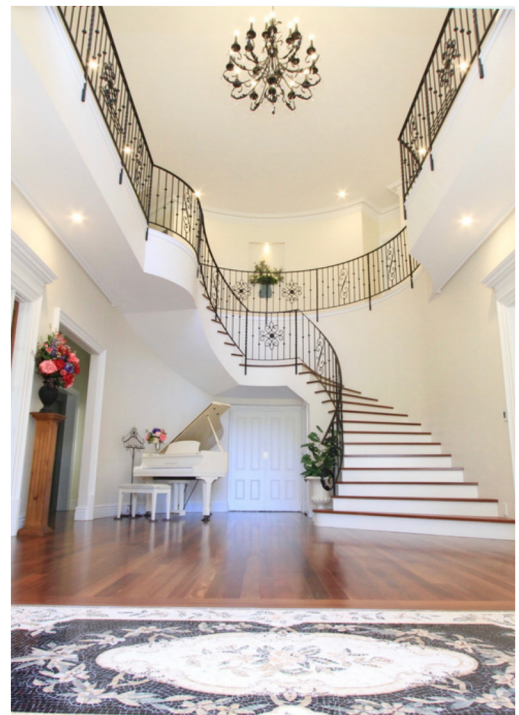
Yatahlia will be a beautiful and significant addition to any getaway or special event.

*"Thank you for welcoming us into your beautiful home... Our stay at Yatahlia has been a highlight of our holiday to SA. the only regret is that we didn't stay longer..."*

*Linda & David, Gerry & Julie. from Qld*



A unique, timeless estate centrally located between The Adelaide Hills, The Barossa Valley, The Beach & The City



# Why Yatahlia Manor?

An event at Yatahlia means you are sharing a beautiful homely environment, not just a venue, and depending on the option you choose to book, you have the unique opportunity to live in elegant luxury for your stay.

Staying for your Wedding Eve is a valuable extension of your whole wedding experience. After months or even sometimes years of meticulous planning, it is all over in one day! The infinite lists and ever-increasingly intense stress often blur the last few days before your ceremony. Booking your wedding eve, or even just your wedding day prep here at Yatahlia Manor, ensures you stop and take a breath to really enjoy all that you have planned.

Arriving through the gates and driving down the tree and rose-lined driveway is like entering a peaceful cocoon. It's a serene oasis where you are pampered and no longer have to worry.

Sadly, sometimes things do go wrong, or you have forgotten to bring something with you...it's extra peace of mind getting prepared in this beautiful home. Lorelie has all sorts of things for repairs, clean-ups, replacements etc. Things that only a home has on hand and a venue wouldn't have available.

Lorelie or one of our hostesses will care and cater for you and your team just like a mother, ensuring you continue to relax and enjoy the whole experience while all the plans you have lovingly orchestrated for your special event fall into place.

Ceremonies are another delightful experience available for you to enjoy at Yatahlia. The many options for the ceremony location often make choosing the perfect place difficult.

Last but not least, use the picturesque backdrop of Yatahlia for your photography session to capture unforgettable memories.



# Wedding Prep Hire

Hire Yatahlia Manor's elegant interior and generous light-filled rooms to prepare for your special day.



**7 am arrival to 3 pm departure - 8 hours**

Arrivals or departures before & after these fixed hours will be charged an extra \$250 per hour +GST

**BYO OPTION**

**\$1,350<sup>+GST</sup>**

\$150 Service fee applies

**CATERED OPTION**

**\$1,750<sup>+GST</sup>**

+\$50/person above 6 guests  
Special dietary request are an extra \$10 per person

Please note that an additional bond is required when booking Wedding Prep Hire. Refundable if there is no theft or damages, no glitter on any outfits, the maximum of 16 people inside is not exceeded (including the photographer & videographer), and all vehicles arriving and departing are quiet & respectful of our neighbours.



Once you're dressed & ready, Yatahlia will provide a magnificent backdrop for your reveal and or pre-wedding photos.



# Wedding Eve Package

Relax in comfort and luxury with your bridesmaids the night before your big day... Take time to pamper yourself and prepare in the picture-perfect surroundings of Yatahlia.

## BRIDE'S COMMENTS:

*"Thank you so much for everything. Every little thing I forgot, you had. You made the whole experience magical; forever grateful." Rachelle*

*"We cannot fault a thing! Your hospitality is second to none! We had the most beautiful wedding eve stay and wedding." Alicia*

*"Thank you for making our wedding dreams come true. It has been an incredible experience. You made everything stress-free and easy." L Harvey*

TOTAL VALUE:

PRICELESS

**\$2,800**<sup>+GST</sup>  
Public Holidays \$150 extra

Please note that an additional bond is required when booking a Wedding Eve Package. Refundable if there is no theft or damages, no glitter on any outfits, a maximum of 16 people inside (including the photographer & videographer) and all vehicles arriving and departing are quiet & respectful of our neighbours.

# What You'll Get

1

## Accommodation

You and your 'bride tribe' can relax in the four luxurious spacious and comfortable bedrooms. 3 queen beds & 2 king singles. (Maximum of 8 guests.)

2

## Pamper Hamper

A lovely pamper hamper filled with items that will help you unwind and enjoy before your big day.

3

## Happy Hour

Once you have settled in, enjoy one complimentary Gin and Tonic or glass of wine per person as you stroll around the gardens. Feel free to bring other drinks, as we are not a licenced venue we can not sell or provide more alcohol.

4

## Dinner

You can relax knowing that your dinner is provided for. Our amazing Grazing platter is delicious. You are also welcome to bring extra food if you have special dietary requirements.





## 5 Games Room & Cinema

Use the games room to socialise, then after dinner spend the evening enjoying a movie in the cinema as you nibble on the chocolates & popcorn provided for your night in.

## 6 Brunch & Bubbles

Your wedding day breakfast and lunch will be customised for how you plan your day. The generous & delicious food provided all day will be ample for you and your team.

If you have special dietary requirements or need extra catering for other family members that will be getting prepared here, please let us know. (Additional cost)

## 7 Preparation Space

Yatahlia's living area provides a beautiful, elegant space with great lighting for your hair stylist & make-up artist to get to work.

## 8 Photo and Video Access

Your photographer & Videographer will have access to use the home & property with your bridal party to capture stunning images before departing for your ceremony.



## A Hostess

9 Your stay is complete with a hostess that will care and fuss over you like a mother. Lorelie or one of our other hostesses will ensure everything at Yatahlia runs to plan & helps to smooth any issues that pop up.

## 10 Check-in & Check out

Check-in time is from 4 pm, and check-out on your wedding day is when you leave for your ceremony.

(Check-outs after 5 pm will be charged extra)

# Optional Extras

### Grooms Photos

Your groom can also enjoy the photo opportunities that Yatahlia Manor has to offer. Don't worry, we can keep you separated until you either have your reveal or when you walk down the aisle.

#### Inclusions for the groom

- Use of the games room area.
- Groom & groomsmen plus up to four extra family members.
- Water & Soft drinks included.
- \$250\* for the first 90 mins. \$125\* per hr after.
- A grazing platter for the men is available from \$25\* per person.

**Yatahlia does not have a liquor license.**

**We cannot sell or provide alcohol; however, you may BYO, but we remind you to drink responsibly.**

**\*Prices do not include GST.**

**\*Special price available only with a Wedding Eve Booking.**



# Ceremony Site Hire

Yatahlia Manor's numerous ceremony locations are perfect for gorgeous garden weddings.



Yatahlia Manor, with its serene lake and wonderful gardens, provides picturesque surroundings for you to declare your love to each other. Your ceremony setting will be a visual delight to your guests and your photos.

## Elopement Ceremonies

Maximum 16 people

Garden only 2 hours – \$500 +GST Garden & inside 2 hours – \$750\* +GST

## Garden Ceremonies

FROM: \$1000 +GST

Maximum 100 guests not incl. bridal party or service providers

Option 1: Outside only garden ceremony 3.5 hours \$1000 +GST

Option 2: Classic Garden ceremony, including photo opportunities inside (for the bridal party only) \$1250\* +GST

Public Holidays \$100 Surcharge.

\*Please note: An additional bond is required if you choose packages with photo opportunities inside the manor.

All ceremony prices do not include chairs or ceremony décor

Plenty of off street parking available

# Ceremony Site Options

01

FACING THE LAKE

THIS OUR MOST POPULAR SITE. THE LAKE AND WATERFALL SET THE SCENE



02

BY THE LAKE

A BEAUTIFUL SETTING FACING THE GUMS WITH A CENTRAL AISLE



03

THE GAZEBO

CEREMONY CHAIRS SET BETWEEN THE AVENUE OF ORNAMENTAL PEAR TREES



04

THROUGH THE GAZEBO

IMAGINE WALKING TOWARDS YOUR GUESTS WITH THE MANOR AS YOUR BACKDROP



05

THE COURTYARD

A GORGEOUS FORMAL SETTING WITH YATAHLIA'S VERANDAH AS AN OPTION FOR A 'STAGE'



06

THE JETTY

IDEAL FOR SMALLER CEREMONIES THE FOUNTAIN ADDS A MAGICAL TOUCH

# Ceremony Site Options

07

## THE PORTICO

ELEGANT & INTIMATE  
THIS IS A STUNNING  
ELOPEMENT OPTION



08

## THE ISLAND

AN ELOPEMENT OPTION  
ENTER BY A SMALL BRIDGE,  
SUROUNDED BY THE LAKE



09

## THE VERANDAH

OUR WET WEATHER OPTION  
THE WIDE VERANDAH WRAPS  
THE BACK COURTYARD



*"If you haven't yet decided on a ceremony location, I highly recommend the option of having both your preparation time (or our Wedding Eve Package) and then your ceremony, which includes your photography session, all in one place."*

*Lorelie xx*



# Wedding Eve & Ceremony Package

## The benefits of having your prep (Wedding Eve Package) and ceremony all in one location:

All the amazing benefits of a Wedding Eve Stay

PLUS

- Your rehearsal can be booked during your wedding eve stay
- Your wedding morning is a relaxing experience, not a mad rush
- You have a longer time to prepare & have pre-wedding photos
- Your ceremony set-up time can be earlier & longer
- Your florist can have longer to decorate your arbour & ceremony site
- You only need to walk outside to check that your ceremony setup and flowers are exactly as you want
- Your dress won't get creased in a car before you walk down the aisle
- You don't need car transport until leaving for your reception
- Everyone comes to you in one place; you don't need to go anywhere
- The groom can have the optional extra of having a few photos in the games room area before the ceremony
- You can have a 'reveal' with your parent, bridesmaids or even your groom before walking down the aisle
- You will be able to have a longer time with pre-ceremony photos
- Even your photography session is here after the ceremony
- You can have the optional extra of providing platters for your guests to enjoy on the terrace by the lake while you have your photos taken
- You will have a little extra time to pack your things

**\$4,050 + GST**

**Public holidays \$4,200 + GST**

Please note there is an additional \$500 bond required



# Photography Site Hire

Yatahlia Manor is a photographer's dream, there are infinite photo opportunities both inside the elegant manor and around the beautiful gardens of the estate.

*Make your day  
unforgettable*

Yatahlia Manor and its gorgeous gardens provide picturesque backdrops for you to make memories that will last a lifetime.

Please note that an additional bond is required when booking a photography site hire session. Refundable if there is no theft or damages, no glitter on any outfits, booking times are adhered to, the maximum of 16 people inside is not exceeded (including the photographer & videographer), and all vehicles arriving and departing are quiet & respectful of our neighbours.

**\$250 PER HOUR** plus GST  
**MINIMUM 2 HOURS**

\*Does not include the photographer

**WEDDING, ENGAGEMENT, CORPORATE, FASHION & SPECIAL  
OCCASION PHOTOGRAPHY SESSIONS WELCOME.**

# Accommodation



Yatahlia Manor offers four spacious and luxurious rooms for up to 8 guests. Check-in is from 2 pm. Checkout before 10 am.

## ROOMS & PRICES:

### The Silver and The Teal Suites

These stunning suites are located on the second floor accessible by the grand stairs or the elevator.

Each room has views overlooking the sweeping front lawn and gorgeous gardens. Both of these spacious queen bedrooms have their own private ensuite.

**\$400 per suite per night** (plus GST)

Max. 3 nights

### The Bird's nest & The Dovecote

Both of these bedrooms are located in the cosy private loft of the 'West Wing' of the Manor and accessed by a second staircase. The Dovecote has a Queen bed and shares a private luxurious bathroom with The Bird's Nest, which has 2 King single beds.

**\$350 per room per night** (plus GST)

Max. 3 nights

## OPTIONAL BREAKFAST PROVISIONS AVAILABLE

**\$25 PER PERSON PER NIGHT**  
(plus GST)

Special dietary requirements will be an additional \$10 per person. Must be pre-ordered & pre-paid for.



# How It Works

01

## BOOK A SITE VISIT

Phone or email to arrange an appointment to see if Yatahlia is suitable for your needs.

02

## GET A QUOTE

Once you have decided how Yatahlia will fit into your event plans, email us with the exact details of what you would like. A quote will be emailed in return, along with an invoice & our terms and conditions.

03

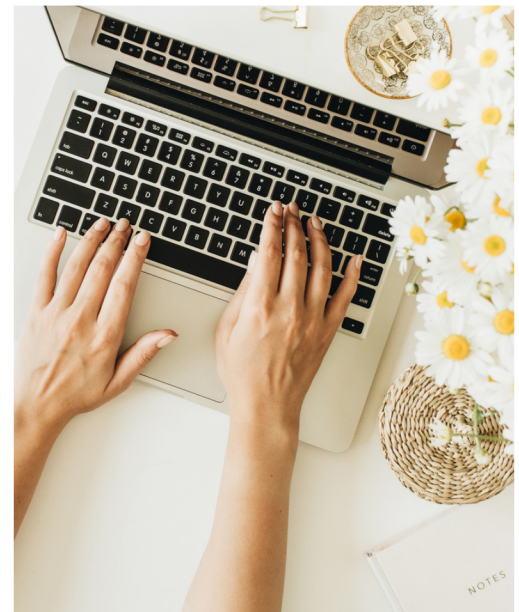
## PAY YOUR DEPOSIT

When we have received your deposit of \$500 +GST and signed terms & conditions, you will receive an email and receipt confirming have secured the date and booking.

04

## FULL PAYMENT

Full payment must be paid one month before your booking. You will also receive an email with forms for you to fill in & then return to us. This information tells us more about your plans while you are at Yatahlia Manor.



## COMMUNICATION

### CONTACT DETAILS

+61-402 907 077  
admin@yatahliamanor.com  
488-500 Yatala Vale,  
Yatala Vale SA 5126

### OFFICE HOURS

M - F 9:00am - 7:00pm CST  
Sat 9:00am - 7:00pm CST  
Sun 11:30am - 7:00pm CST

### WEBSITE

[www.yatahliamanor.com](http://www.yatahliamanor.com)

### SOCIAL MEDIA

Instagram: @yatahlia.manor  
Facebook: Yatahlia Manor

# Optional Extras



## Grazing platters

Platters on the terrace by the lake for you and your guests to enjoy after your ceremony or while you have your photography session.

**\$175+GST Each platter feeds 10-12 people**  
Included in the 3.5 hours of your ceremony site hire.

## Singer–Guitarist

Louise from Weezy Listening will entertain your guests for **\$250 for 1 hour** while they enjoy platters by the lake.



## Harpist

Enjoy the heavenly sounds of a harpist playing during your ceremony.

**From \$300 per hour.**

# Optional Extras



## Chilled drinks

Refreshing bottles of water & soft drink are available for **\$3.00 each** with your platters. Must be pre-ordered & pre-paid.

## Photos for groom

Your groom can also enjoy the photo opportunities that Yatahlia Manor has to offer.

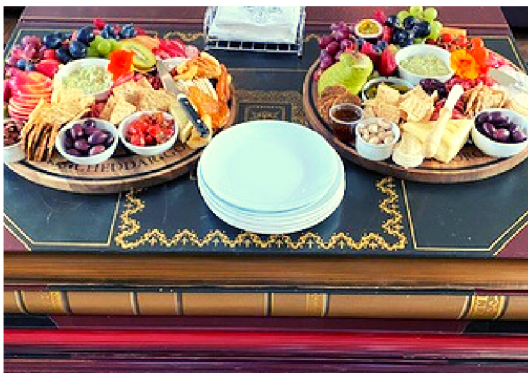
- Use of the games room area.
- Groom & groomsmen plus up to four extra family members.
- Water & Soft drinks included.
- **\$250\*** for the first 90 mins. **\$125\*/hour** after

Yatahlia does not have a liquor license.

We cannot sell or provide alcohol; however, you may BYO, but we remind you to drink responsibly.

\*Prices do not include GST.

\*Special price only available when booked with a Wedding Eve Package.



## Platter for the Boys

A Grazing platter for the groom and his men are available for **\$25\*** per person with an additional **\$10\*** per person if we need to cater for special dietary requirements (\*plus GST)

# Venue Hire

Yatahlia Manor's gorgeous gardens, sweeping lawns, beautiful lake and courtyard area are ideal for your elegant garden event.



\*Venue Hire - Gardens Only.

All other requirements (including catering, tableware, furniture, decorations, special lighting & staff) are to be hired/supplied by you.  
A licenced operator must provide and serve all alcohol.

**PRICED FROM**  
**\$2,000**  
(plus GST)

**MAXIMUM**  
**5 Hours**  
conditions apply

**Saturday 10 pm finish and all guests must vacate the venue by 10:30 PM**

**Sundays 7 pm finish and all guests must vacate the venue by 7:30 PM**

A \$1500 bond will be required to cover property damage, incomplete clean-up, uninvited guests that enter the manor, music style/volume that exceeds our planning approval, and a good behaviour agreement that ensures all guests and vehicles are respectful of our neighbours.

**The outdoor areas of Yatahlia will help to make your event  
absolutely breathtaking and memorable**

**Maximum 100 Guests**

Does not include the bridal party, helpers or service providers

Off-street parking available

# FAQ's

## Can I extend my ceremony time?

Yes, you can revert to an hourly site hire rate of \$250 per hour (plus GST) to extend your time. This must be paid in advance.

## What if I can't get my chairs & hired items picked up during my site hire time?

Sometimes this can't be avoided. Please notify us in writing of the problem & request an alternative time that suits all parties instead. Please organise help to move all hired items from lawned areas to a suitable location, as automated sprinklers run daily with bore water that could potentially stain.

## Can I have confetti?

Usually, this is not a problem; organic or biodegradable is permitted, but please let us know first, just in case it is not suitable for our ducks or pond ecosystem.

## Can I just hire Yatahlia Manor for the day to prepare for my wedding?

Yes, you may hire Yatahlia Manor for the day. Please see our Wedding Prep Packages for the options. The arrival time is 7 am and finishes at 3 pm. Changes to these hours are an extra \$250 per hour +GST.

The Catering option provides Brunch for six people served around 10 am. Water, juice, tea & coffee are included. BYO alcohol as we are not a licenced venue. Extra people are \$50 per person, but an additional \$10 is added per person if special dietary needs require us to change the menu (plus GST)

## When do I get my bond back?

After receiving your bank detail, you can expect to receive your bond within seven days providing all conditions were upheld.

## When can I have my rehearsal?

It's easy if you are staying for your wedding Eve, as you can arrange your rehearsal then, but if that isn't possible, just let us know in advance via email of some dates that could work & we will endeavour to fit in with one of them.

## Can I have my dog in the ceremony or for the photos?

Yes, absolutely, as long as your dog is not dangerous and it is always on a lead. (we have to protect our ducks) No dog photos inside, sorry.

# FAQ's

## Can I have more than 100 guests?

Unfortunately, we only have approvals for up to 100 guests. This does not include your bridal party or the service providers.

## Can I have my family come inside the manor to see me before the ceremony?

As Yatahlia Manor is a private residence, we have a maximum of 16 people inside the manor, including service providers. (Part of our bond requirement) This is to reduce the amount of wear & tear on the manor & helps keep our personal property secure. If you think you will exceed this number, please request a possible change to the maximum in writing. This will incur an additional cost.

## Where are the guest's toilets?

There are two toilets available for guests to use. They are located in the carpark area accessed via the walkway between the tank and the shed.

## Can I bring things earlier?

Your hire fee includes access to the property for the duration of your booking. We will endeavour to assist you with earlier access where possible; being a private home, a popular event and accommodation venue, we cannot have visitors or equipment coming on-site when the venue is booked for use by other guests. All items and hired items must be removed from Yatahlia at the conclusion of your event. We do not take responsibility for your or hired property.

## Can I have more than 8 people stay?

Our maximum is 8 guests, but a fold-out bed is available for an additional cost. Price on application.

## Will there be enough food?

Yes, you will be provided for up to 8 people for a wedding eve, but you are welcome if you wish to bring extra food or order food to be delivered.

## Can I bring extra alcohol?

Yes, absolutely, as long as you drink responsibly. Yatahlia Manor is not a licenced venue. We can only provide you with one complimentary glass of wine or a gin & tonic during happy hour. We can not supply or sell alcohol.

# FAQ's

## What time is Check-in & Check out?

Accommodation-only Check-in is 2 pm, Check out is 10 am.

Wedding Eve Check-in is 4 pm. Check-out is when you leave for your ceremony (Check-outs after 5 pm will be charged extra). Wedding Prep Hire Check-in is from 7 am Check-out is 3 pm. \$250 per hour before and after these times.

## Are Children able to stay at Yatahlia Manor?

Due to the risks associated with the stairs, balconies, lake, creek & donkeys, we do not recommend that children under the age of 5 stay at Yatahlia Manor. For safety, we request that if children are part of your ceremony, they are properly supervised and remain close to a parent or guardian at all times.

## Can I have photos with the donkeys?

Sadly no; although Cali & Jeremiah are adorable, they are also very dirty. (They love to roll in dirt & ash) We wouldn't want you to ruin your outfits.

## What happens if the weather inclement?

Unfortunately, the weather can cause a change of plans. Yatahlia's verandah surrounding the rear courtyard is our wet-weather option.

## Is there enough parking?

Yatahlia has ample off-street parking available for your guests. Unless you are a paying guest, your vehicle must not be left overnight.

## Can I also stay for my wedding night?

Yes, we welcome you to return for your wedding night. Check-out time for our bridal couples is 11 am. An optional breakfast provisions box is available for \$25 per person. (\$10 extra if special dietary requirements are needed.)

## Do you have power by the ceremony site?

Yes, we can ensure that power is available for you. Please advise us in advance if it is required.

## I have special dietary requirements, do I need to bring my own food?

We try our best to cater for our guest's needs. If your special dietary needs require us to change our menu, there will be an additional charge of \$10 for each guest that requires the changes. You are welcome to bring your own special food.



Please let me know if you have any further questions or would like to make an appointment to view Yatahlia Manor. It is worth a visit to see how Yatahlia can be a part of your special event.

*Lorelie*



+61 402 907 077

[admin@yatahliamanor.com](mailto:admin@yatahliamanor.com)

[www.yatahliamanor.com](http://www.yatahliamanor.com)

Instagram @yatahlia.manor

